



LIFE FLOOR LOOKBOOK

VOLUME 8



**WE BELIEVE ALL
AQUATIC SPACES
SHOULD BE SAFE
AND BEAUTIFUL**



TABLE OF CONTENTS

01	OUR TILES
03	Certified for Aquatic Play
05	Imaginative Design Possibilities
07	Accessible Aquatics
09	FEATURED PROJECTS
11	Jungle Bay Waterpark
15	City of Dothan, Alabama
19	ULTIQA Resort
23	Courtyard by Marriott Anaheim
27	Hills Swimming School
31	CREATIVE OPTIONS
33	Colors
35	Textures
37	Shapes
39	Inlays
41	Custom Design
43	Logos and Branding
45	Specialty Items
47	Finishing Details
49	PROJECT PLANNING
51	Design Process
52	Budgeting
53	Project Timeline
54	Installation
55	Samples
56	Contact Us



TRACTION TO PREVENT SLIPS CUSHIONING TO PROTECT FALLS

It all started with a vision for happier experiences at safer aquatic facilities.

As the first safety surfacing engineered specifically for aquatics, our goal has always been to reduce or eliminate injuries wherever our tiles are installed.

Over the past decade, our mission has expanded to include impactful design, increased play value, and inclusivity. As Life Floor evolves, one thing remains the same: **people will always be at the heart of our purpose.**



THE ONLY SAFETY SURFACING CERTIFIED FOR AQUATIC PLAY

Splash pads are wet playgrounds.

Understanding the danger that concrete and other surfaces can pose in these aquatic environments, NSF/ANSI/CAN 50:26 recommends that they all feature certified safety surfacing. Life Floor is the first product to meet this standard.

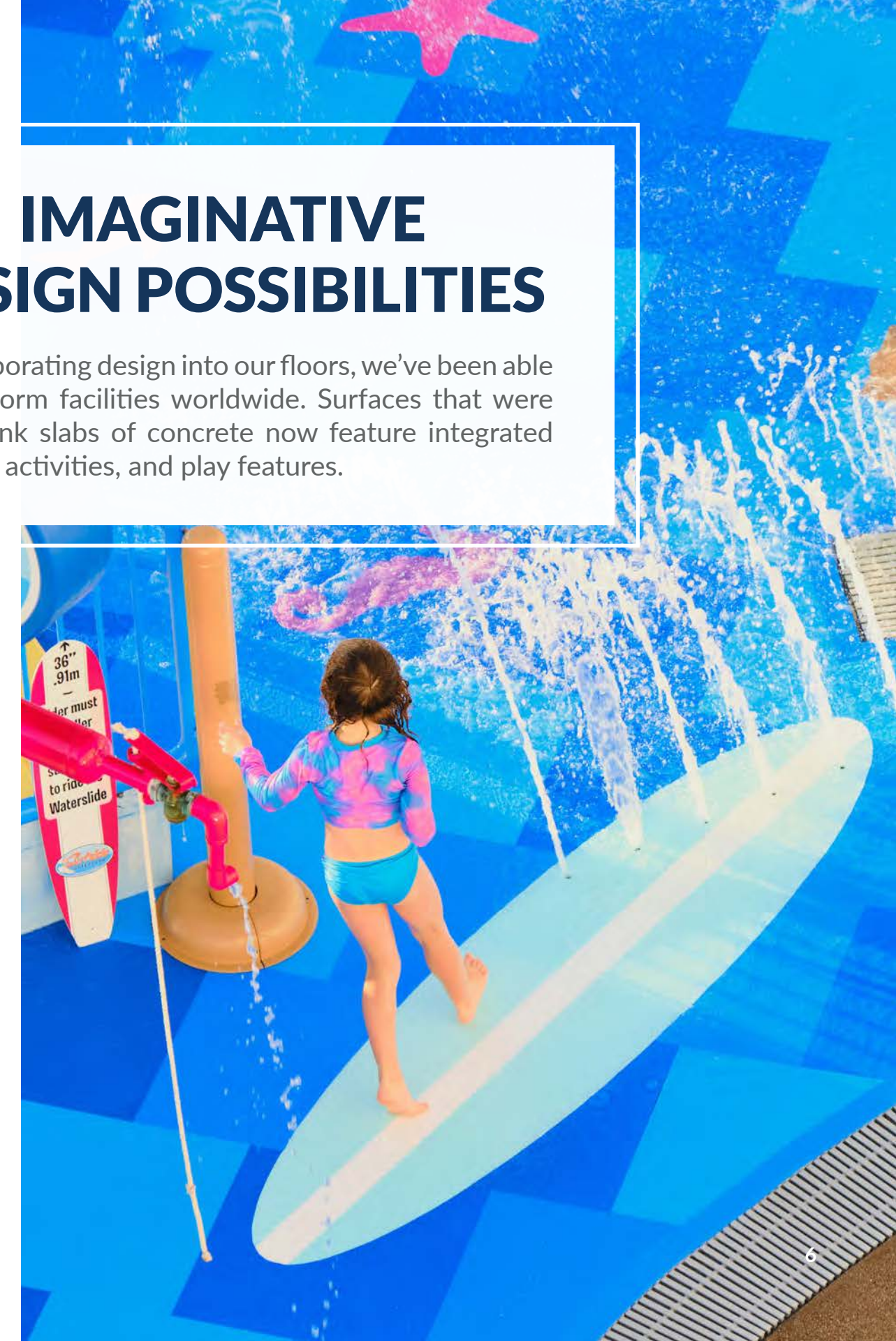
As part of the certification process, our tiles have been third-party tested to demonstrate slip-resistance and impact cushioning for improved safety. They have also shown aquatic durability after passing tests for UV and chemical resistance, impermeability, and cleanability.

To learn more, visit lifefloor.com/nsf-ansi-50.



IMAGINATIVE DESIGN POSSIBILITIES

By incorporating design into our floors, we've been able to transform facilities worldwide. Surfaces that were once blank slabs of concrete now feature integrated theming, activities, and play features.





BECAUSE AQUATICS SHOULD BE ACCESSIBLE TO ALL AGES AND ABILITIES

With little to no depth, splash pads have expanded access to water play around the world; however, these spaces have only truly become inclusive with the introduction of safety surfacing.

Soft, cushioned, and textured flooring reduces risk of slip-and-fall incidents. It makes navigating a splash pad more inviting to people of all mobility types. It enables guests to engage and explore in so many more ways - crawling, running, jumping, and even cartwheeling.

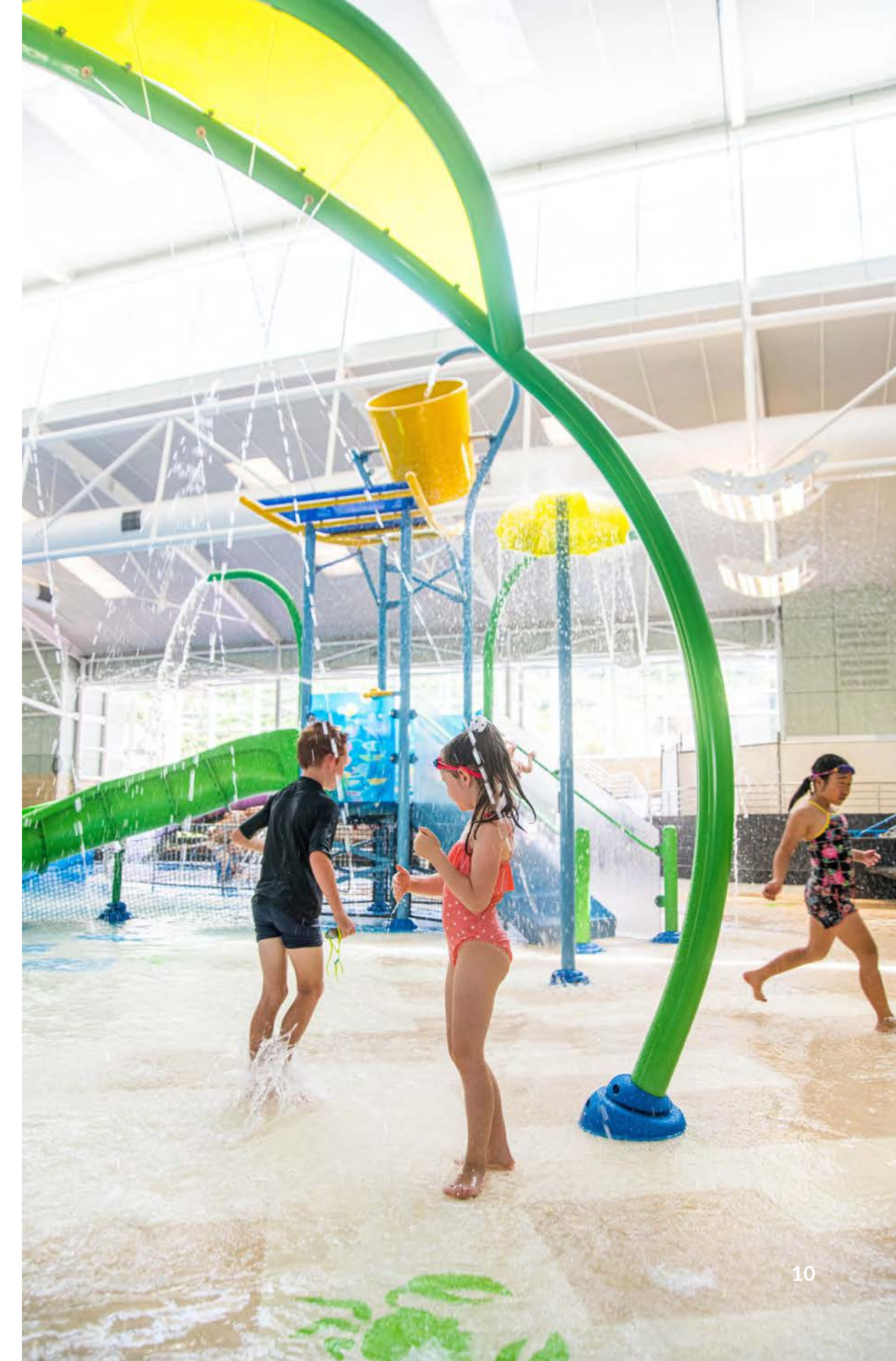
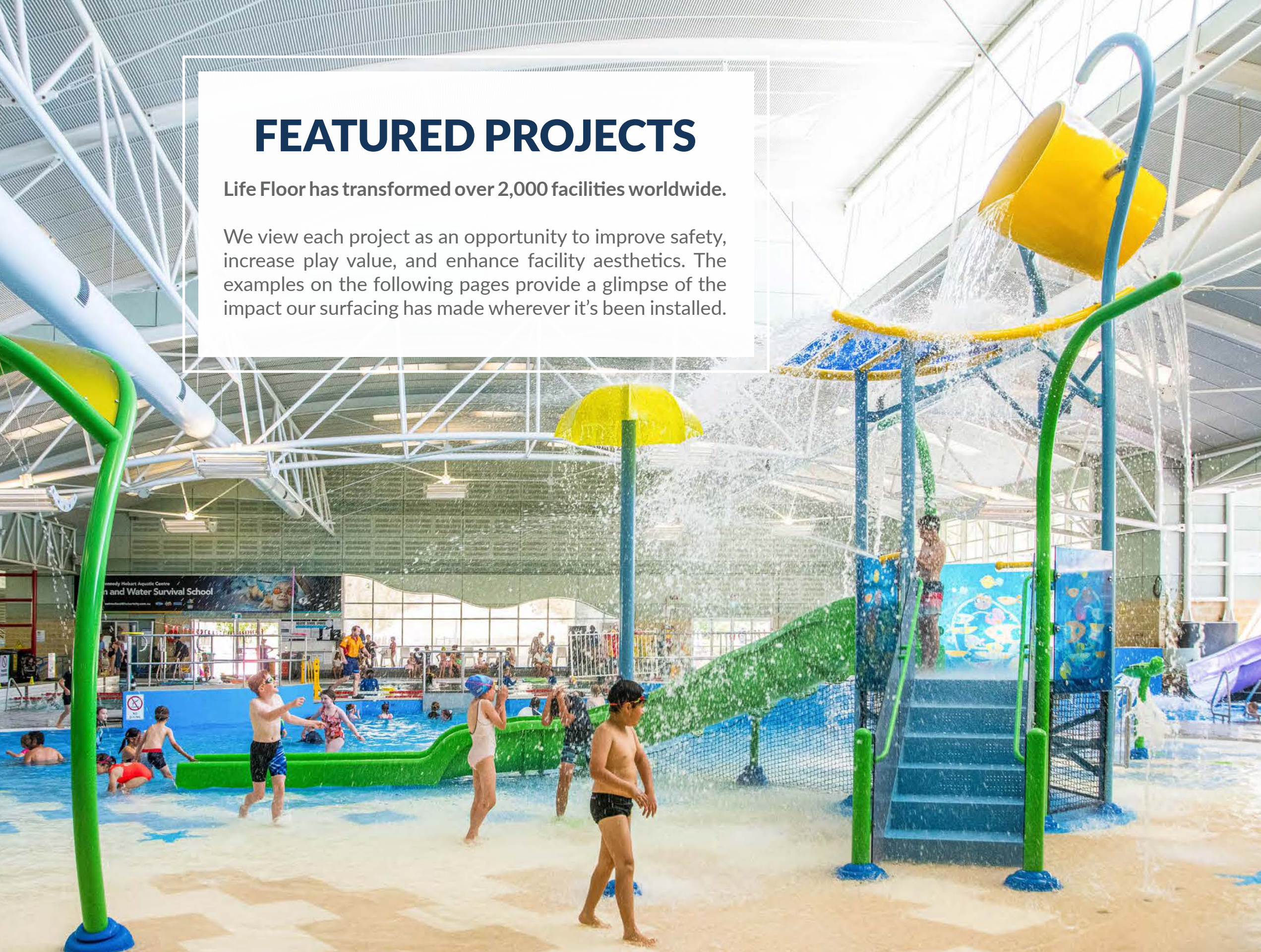
More comfortable surfaces accommodate risky play, imaginative play, accessible play, and multi-generational play.

Humane design benefits everyone.

FEATURED PROJECTS

Life Floor has transformed over 2,000 facilities worldwide.

We view each project as an opportunity to improve safety, increase play value, and enhance facility aesthetics. The examples on the following pages provide a glimpse of the impact our surfacing has made wherever it's been installed.



JUNGLE BAY WATERPARK



Facility: Jungle Bay Waterpark
Location: The Westin Dubai and Le Méridien Mina Seyahi Beach Resort, Dubai, UAE
Install Date: December 2020
Designer: WhiteWater West
Area: 21,500 sq ft (2,000 sq m)
Texture: Ripple 2.0
Thickness: 3/8"

IMMERSIVE RESORT THEMING

To complement the beach-theming of this waterpark, WhiteWater selected a triangle gradient of Life Floor tiles creating a cohesive design to elevate guest experience.





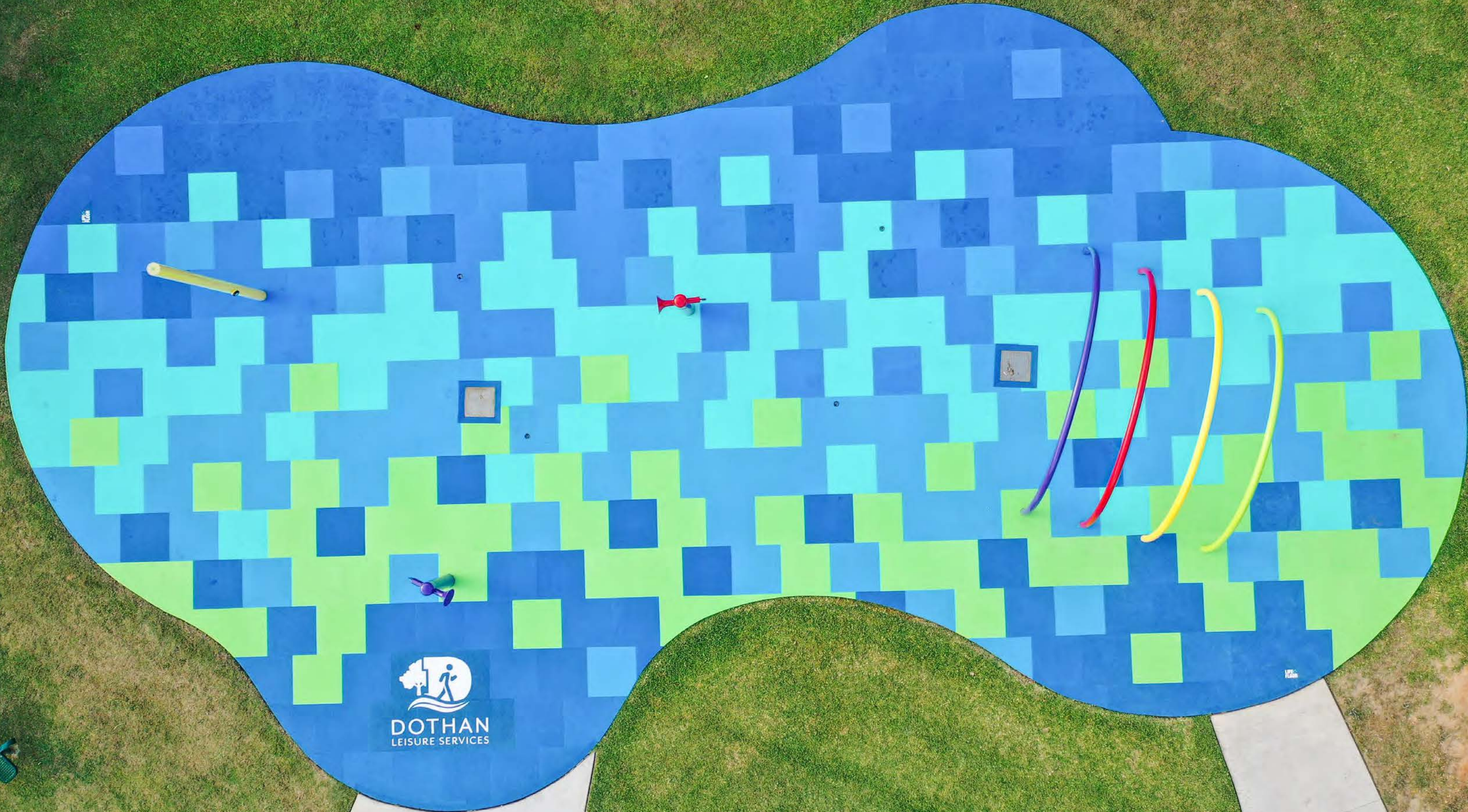
CITY OF DOTHAN, ALABAMA



REVITALIZED LOCAL SPLASH PAD

As the first winner of our Make a Splash! Grant Contest, Dothan, AL received free splash pad surfacing to add a layer of safety and design while enhancing play value and refreshing the look of this central community feature.

Facility: Andrew Belle Splash Pad
Location: Dothan, Alabama, USA
Install Date: April 2021
Designer: Life Floor Studio
Area: 1,358 sq ft (126 sq m)
Texture: Ripple 2.0
Thickness: 3/8"




DOTHAN
LEISURE SERVICES

ULTIQA BEACH HAVEN ON BROADBEACH RESORT



Facility: ULTIQA Beach Haven on Broadbeach Resort
Location: Broadbeach QLD, Australia
Install Date: May 2020
Designer: Grassports Australia
Area: 560 sq ft (52 sq m)
Texture: Ripple 2.0
Thickness: 3/8"

MAKING WAVES AT A UNIQUE RESORT POOL

Showcasing a curvy design and a refreshing palette of blues, this resort pool deck becomes a visual centerpiece with the added benefit of cushioned surfacing for safer play.







COURTYARD BY MARRIOTT ANAHEIM



CREATING VACATION MEMORIES THAT LAST

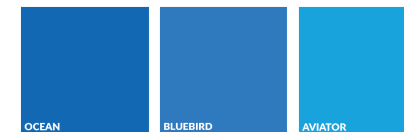
Integrated games and colorful ocean-inspired shapes add play value to the waterpark at this family-friendly hotel located across the street from the Disneyland Resort.

Facility: Courtyard by Marriott Anaheim Theme Park Entrance
Location: Anaheim, California, USA
Install Date: January 2020
Designer: WhiteWater West
Area: 4,300 sq ft (400 sq m)
Texture: Ripple 2.0
Thickness: 3/8"

Inlays + Play Features



Primary Palette





HILLS SWIMMING SCHOOL



Facility: Hills Swimming School
Location: Kenthurst NSW, Australia
Install Date: January 2020
Designer: Life Floor Australia + New Zealand
Area: 1,453 sq ft (135 sq m)
Texture: Ripple 2.0
Thickness: 3/8"

STANDING OUT FROM THE COMPETITION

A bright zigzag pattern transformed what was once a slippery concrete pool deck into a safer and more vibrant facility for swimming lessons, team practices, and swim meets.





UNLIMITED CREATIVE OPTIONS

When you design with Life Floor, you never have to sacrifice style for safety. With a wide range of tile choices, custom design opportunities, and a dedicated Studio Team ready to help, the possibilities are endless.

COLORS

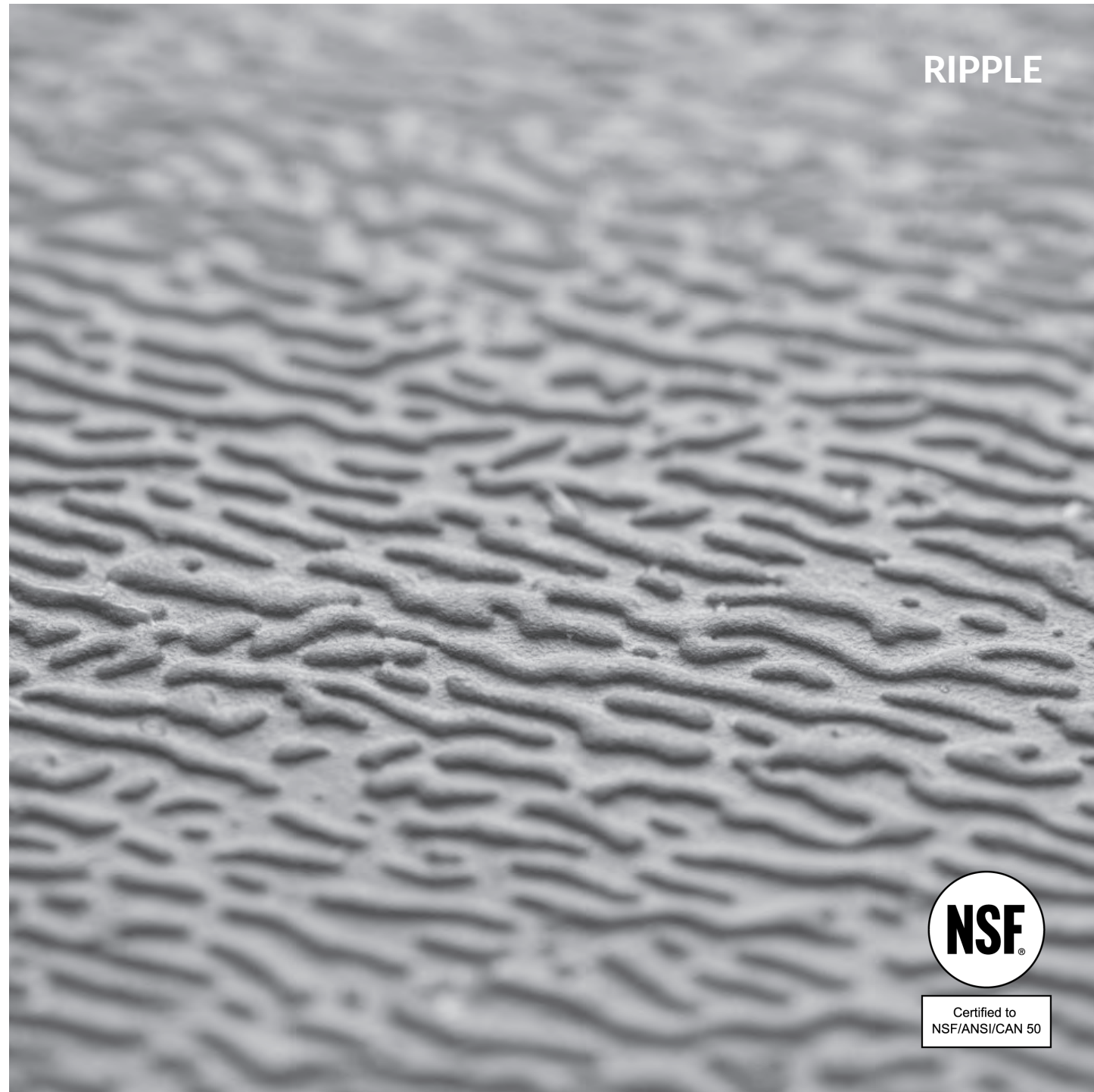
Our palette of colors features gradients and a range of both bright and subdued tones to accommodate the unique design needs of each facility.

The Life Floor Studio Team encourages customers to select three or more tile colors for every application. Surfaces that feature this variety are visually more interesting and operationally easier to maintain.

For creative inspiration and design tips, visit lifefloor.com/design.



TEXTURES



Life Floor tiles are available in two textures: Ripple and Slate.

Ripple is a popular choice because it is the most slip-resistant when wet. As a result, tiles featuring this texture are certified to the NSF/ANSI/CAN 50 aquatic safety surfacing standard. The defined grooves of this texture provide increased traction and decreased risk of hydroplaning.

Slate is designed to resemble the organic look of stone for projects aiming to achieve more natural or architectural looks. This texture features MicroTread™ on the surface to increase slip-resistance.

SHAPES

Life Floor is currently available in four standard geometric shapes that can be configured in a variety of ways for unique facility designs.

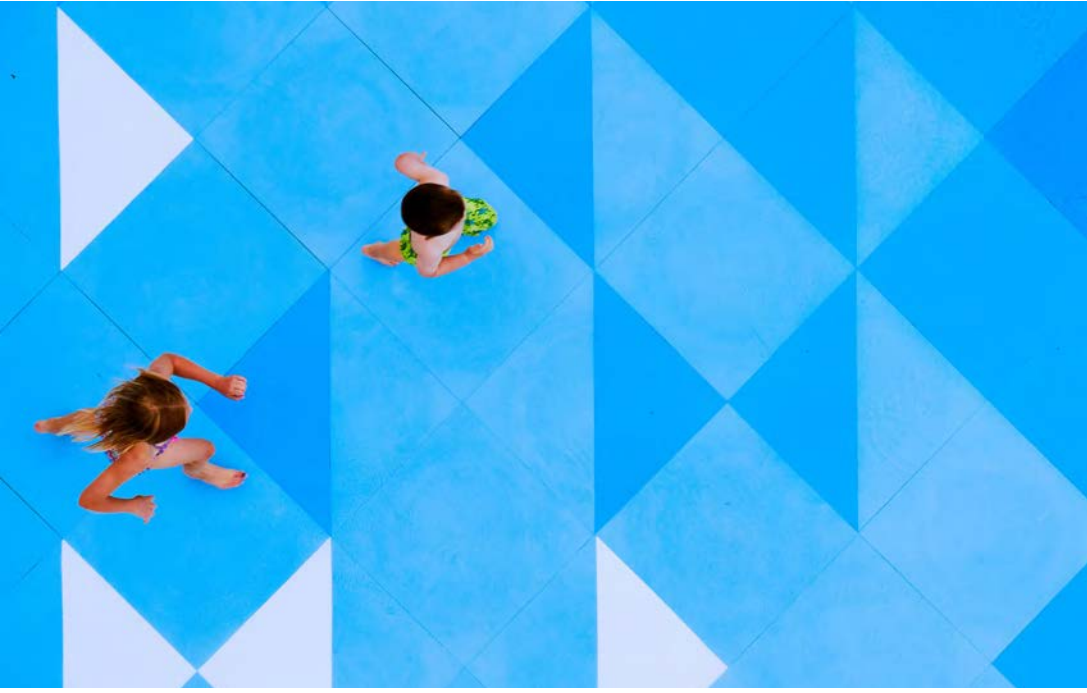
SQUARES

Our tiles are manufactured as 24" squares which makes this shape the most popular and cost effective. Squares are often arranged in randomized color fields or bold geometric patterns.



RECTANGLES

Rectangles are commonly arranged along a 12"x 24" grid or as long planks created by aligning tiles of the same color in a row.

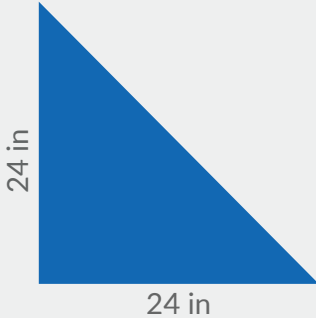
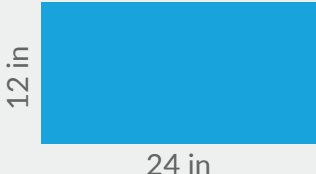


TRIANGLES

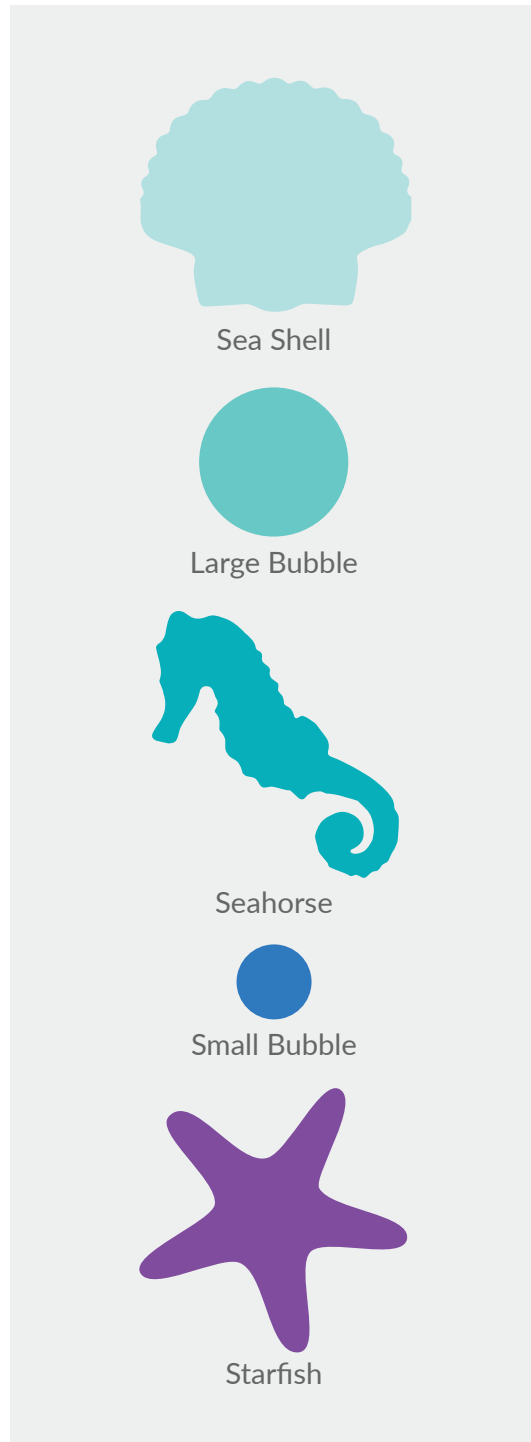
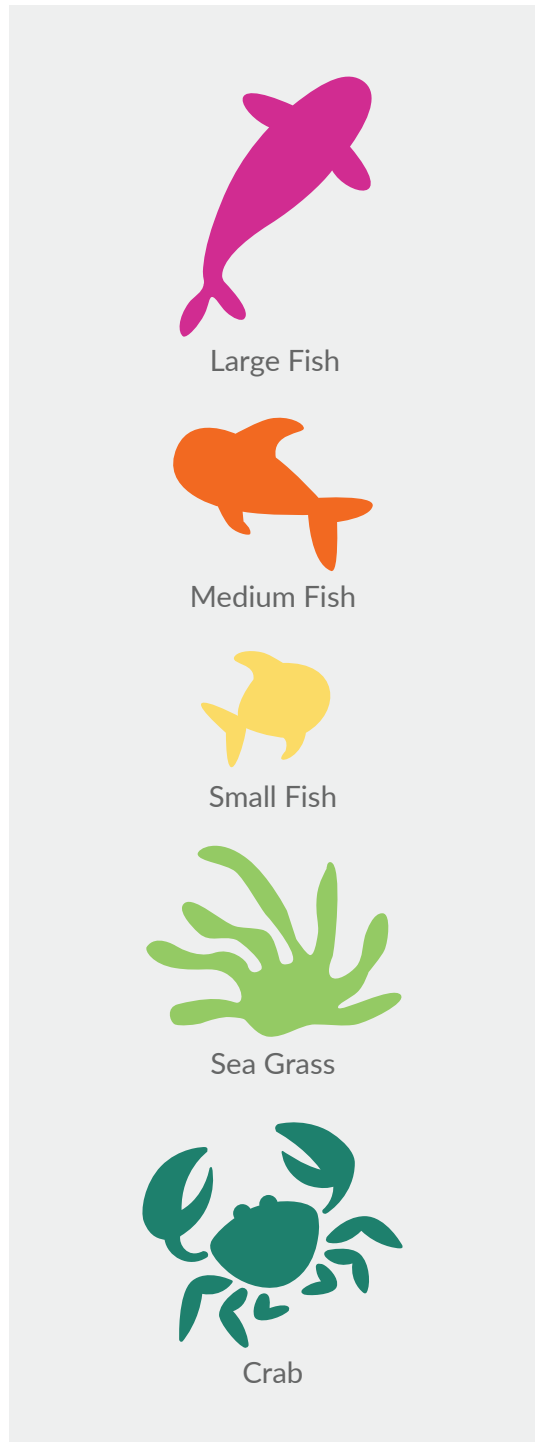
Triangles are the most effective choice for creating gradient effects and adding bold accents around facilities.

HEXAGONS

Hexagons add modern design elements and colorful geometric patterning wherever they're installed.



INLAYS



Inlays are graphic shapes that fit within our standard square tiles. Customers often include these features to add visual interest, enhance theming, and increase play value.

Our Marine set of Inlays is shown on the left. This themed grouping has been perfect for sea-inspired facilities, which is ideal for aquatic applications.

Inlay options are versatile and can be themed to any motif. They can also be customized to feature specific branding or logos.



CUSTOM DESIGN



Immersive designs and bold flooring graphics make facilities truly stand out. Our tiles can be custom cut to feature almost any type of theming, imagery, or patterning imaginable.

If you have a project in mind, contact us to begin exploring design possibilities with our Studio Team.

LOGOS AND BRANDING



Embedding logos within Life Floor surfaces has been a popular design preference for facilities looking to reinforce or showcase branding. We use a proprietary precision cutting process that allows for the exact replication of any logo at any scale. Logo parts come factory cut, labeled, and ready to be installed on site for the most accurate brand representation possible.



SPECIALTY ITEMS

LANDING PADS

Life Floor landing pads are designed to meet the safety and quality standards of today's most challenging aquatic conditions. Our 7/8" landing pad tiles will never absorb water and will remain slip-resistant even when submerged underwater. These modular 24" x 24" square tiles allow for custom sizing, design, and installation. Using the same commercial grade adhesive as our standard tiles, Life Floor landing pads will never recommend the use of bolts to adhere to the substrate.



EDGE PADS + WRAPS

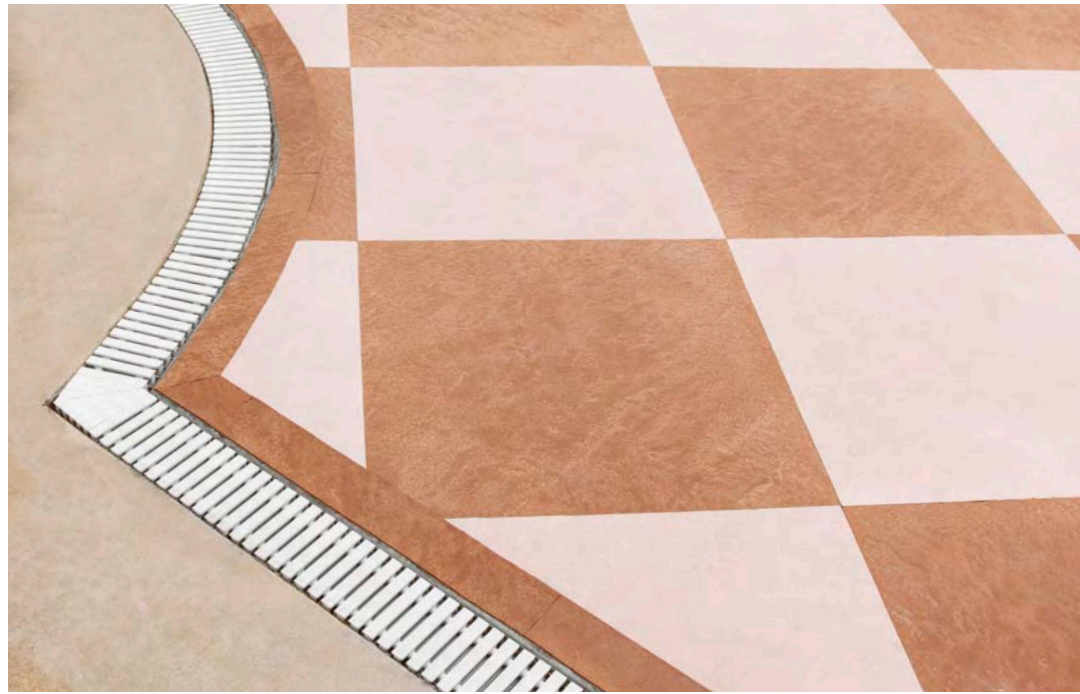
Life Floor is designed to protect visitors from the most accident-prone areas in aquatic facilities. For this reason, many pools that feature activities like lily pad walks choose to wrap our tiles at edge landings. These pads provide traction for more steady footing and cushioning in the event that guests fall. Our tiles can also easily wrap around pool coping to provide extra protection or a continuation of pool deck surfacing to the water's edge. For these applications, we typically layer our more pliable 3/16" thickness tiles.



FINISHING DETAILS

TRANSITION STRIPS

When surface heights vary, our transition strips create safer gradations between Life Floor and the ground level. We recommend transition strips at the edges of most retrofit applications in order to gradually slope down to the level of the existing substrate. Our transition strips are 24" long and 3" wide, can be cut to custom lengths, and are ADA compliant. For new construction, we recommend recessing the slab 1/4" for our 3/8" thick tiles in order to eliminate the need for transition strips. In cases where this isn't possible, this product is the finishing detail we recommend.

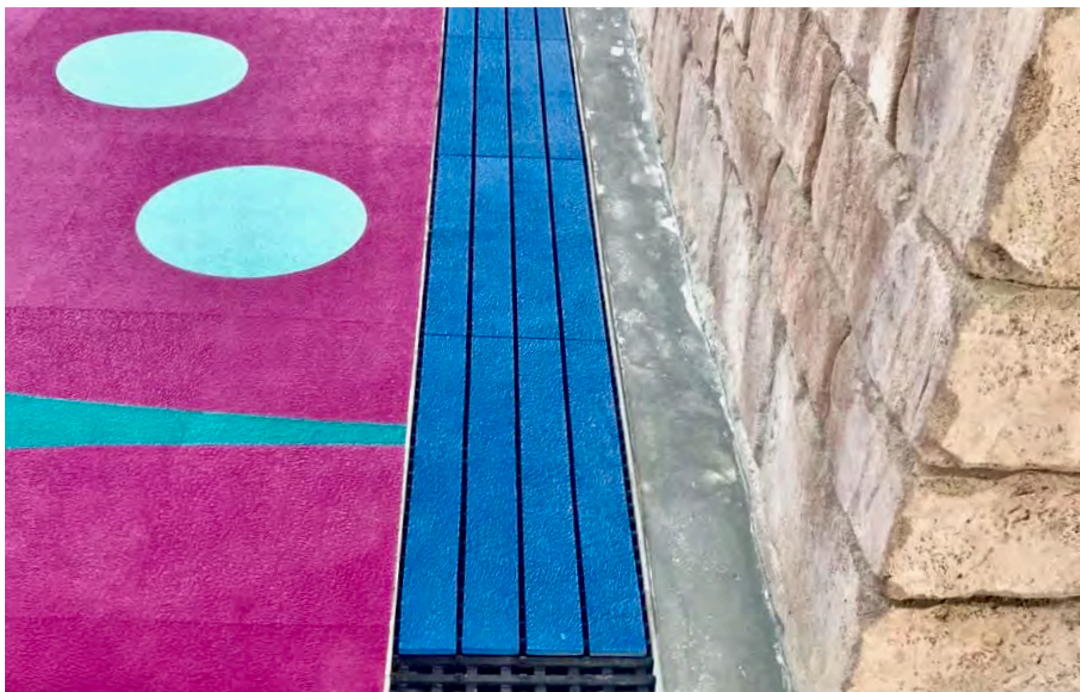


SAFETY MESSAGING

Safety messaging tiles can be integrated into any installation. They are fully customizable, and can be as simple as "No Running" signs or as complex as branded graphics or slide tower instructions. Like our depth markers, all safety messaging tiles are made of precision cut Life Floor.

DRAIN COVERS

Through our partnership with Daldorado, customers are able to continue Life Floor surfacing across the DalLUX support grate drainage system. For other applications, our installers can create custom drain covers to match up with drains located at slab below our tiles. This results in a finished look that blends in with the rest of our safety surfacing while also providing the draining functionality required.



DEPTH MARKERS

Depth markers are made with the same high-performing material as the rest of our tiles. Letters, numbers, and graphics are never painted on. Instead, they are cut from Life Floor and inlaid into our tiles, ensuring that messaging will last the full lifetime of our product.

DIVE INTO PROJECT PLANNING

No two facilities or designs are exactly alike, which makes the process of specifying Life Floor unique. Our team works with our customers and partners from design and budgeting through installation and maintenance to ensure that projects run smoothly and our product delivers maximum benefit.

START WITH A DYNAMIC DESIGN

While some clients and partners opt to conceptualize their surfacing projects entirely in-house, many others choose to take advantage of our Studio Team's complimentary design services.

Our preset Themes (color palettes) and Patterns (tile layouts) often serve as design inspiration or starting points for new projects. Whether beginning with one of those options or starting from scratch, a design direction is quickly established.

The Life Floor Studio Team is then able to visualize tile layout options. After receiving scaled plans, photos (if available), and general design guidelines, our team creates 2-3 concepts for review.

Once a design option has been selected, our team can begin to generate a quote for budgeting.



BUDGET FOR YOUR PROJECT

Tile designs and facilities vary drastically, so the exact costs of Life Floor materials and installation are specific to each project.

For rough budgetary cost estimates on non-custom projects, we recommend referencing the Life Floor Budget Guide, which features pricing for our Themes and Patterns.

For custom projects, reach out to us as soon as possible so we can talk through the surfacing design to streamline the quoting process for the most accurate pricing.



MEET YOUR PROJECT TIMELINE

It takes around 12 weeks from the start of the design process to the shipment of tiles from our U.S. manufacturing facility. While times vary by project, the following phases can be referenced for planning estimates:

- Design Phase**
2 weeks after scaled site plans are received by our Studio Team
- Material + Labor Quote**
1-2 weeks following design approval
- Manufacturing Production**
6-8 weeks following quote approval
- Shipping**
Varies by destination and method chosen



OPT FOR CERTIFIED INSTALLATION

As part of our promise to deliver a premium product and customer experience, we've built a worldwide network of certified installation partners to serve our customers around the globe.

Proper installation is essential to delivering our full surfacing solution and we've selected world-class experts to do just that. Our installation partners have been trained from site assessment to final installation inspection to provide our customers with

accuracy and excellence at every step of the process.

Inside Edge Safety Surfaces is our Preferred Installation Partner in North America. To learn more about their installation process and services, visit safetysurfaces.com.

For more information on our network of Certified Installers around the world, visit lifefloor.com/installation.



SAMPLE OUR SURFACING



If you've never experienced our tiles in person, we recommend ordering a sample to feel the difference for yourself. Having physical swatches of our tile colors on hand is also useful when selecting palettes for new projects.

Order samples at: lifefloor.com/storefront

GET IN TOUCH WITH OUR TEAM



If you're looking to learn more or would like to get started on a project, let us know how we can help!

Contact Us:
solutions@lifefloor.com
612.567.2813



Photo Credits: Edward Addeo, Jennifer Ceci, City of Hobart, Kelsi Goss, Remco Jansen, Martin Aquatic, Briana Massie, Garrett Reid, Royal Caribbean, Gwen Ruehle, Craig Tiberti, WhiteWater West

LIFE  [®]
FLOOR
lifefloor.com

Corporate Headquarters
2010 E Hennepin Ave, Bldg 8, Ste 206
Minneapolis, MN 55413

612.567.2813 | solutions@lifefloor.com

Life Floor is a registered trademark of MNY Group, LLC.
©2021 MNY Group, LLC. All rights reserved.



Certified to
NSF/ANSI/CAN 50

